



Pretty Little Looks

Illustrations  
Look Book

FEELING PRETTY  
Pretty Little Looks  
ONE OUTFIT AT A TIME

# Welcome!



This program isn't just fashion cards + a look book.  
It's a reminder.

A reminder that what you wear is more than fabric — it's magic. It's presence. It's the quiet confidence when you walk into a room and know you belong there. It's the bold decision to take up space. It's the soft power of feeling completely, unapologetically yourself.

Fashion isn't about trends. It's about transformation.

The right outfit doesn't change who you are — it reveals her. The creative. The dreamer. The leader. When you feel good in what you're wearing, you stand taller. You speak clearer. You move differently. Confidence isn't always something you wait for — sometimes, you put it on.

This collection was curated with that in mind. Looks that empower. Pairings that feel effortless, yet elevated. Outfits that carry you from everyday moments to defining ones. Whether you lean edgy, modern, chic, or a little bit boho — there is power in dressing in alignment with who you are and who you're becoming. So wear the color. Try the trend. Mix the unexpected and see where it takes you.

It's time to get  
GLOWING!

XOXO

Jodi



PLEASE NOTE ALL IMAGES IN THIS LOOK BOOK ARE LEGALLY COPYRIGHTED, ORIGINAL ARTWORK THAT MAY NOT BE USED FOR ANY REASON OTHER THAN AS A RESOURCE TO BE PAIRED WITH OUR PRETTY LITTLE LOOKS FASHION CARDS.™



TANK TOP



HALTER



SLEEVELESS



FLUTTER SLEEVE



PEPLUM TOP/VEST



OFF THE SHOULDER PUFF SLEEVE



OFF-THE-SHOULDER



ASYMMETRICAL



PEPLUM



SHORT SLEEVE BLOUSE



CASUAL BALLOON SLEEVES



PUFF SLEEVE



SHORT SLEEVE PETER PAN COLLAR



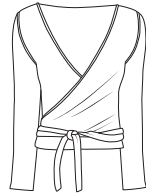
LONG SLEEVE PETER PAN COLLAR



TUNIC



SHORT SLEEVE WRAP



LONG SLEEVE WRAP TOP



SHORT SLEEVE BUTTON DOWN



LONG SLEEVE BUTTON-DOWN



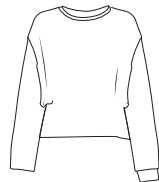
BALLOON SLEEVE BLOUSE



LONG SLEEVE BLOUSE



SHORT SLEEVE BATWING



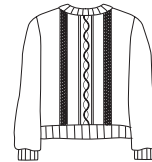
LONG SLEEVE BATWING



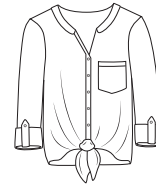
SHORT SLEEVE POLO TOP



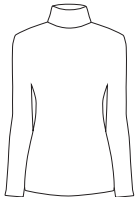
LONG SLEEVE POLO TOP



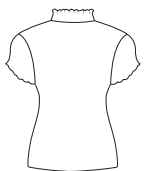
SWEATER



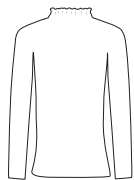
TIE FRONT



TURTLENECK



MOCKNECK



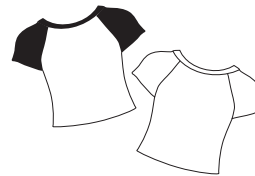
MOCKNECK LONG SLEEVE



SHORT SLEEVE V-NECK



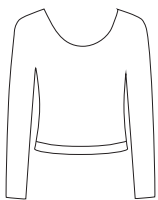
LONG SLEEVE V-NECK



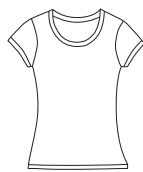
BABY TEE



BABY TEE WITH LONG SLEEVES



LONG SLEEVE ROUND NECK



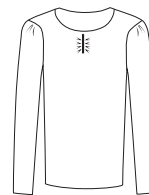
CREWNECK/CAP SLEEVES



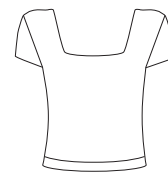
BASIC TEE



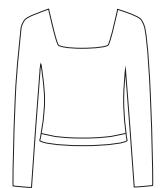
OVERSIZED TEE



ACCENT LAYERING TEE



SQUARE NECK TOP



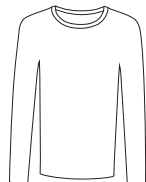
LONG SLEEVE SQUARE NECK



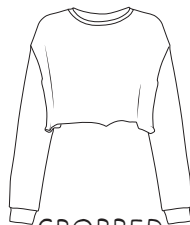
CROPPED TEE



GRAPHIC



BASIC  
LAYERING TEE



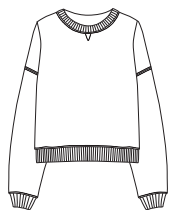
CROPPED  
SWEATSHIRT



CROPPED SWEATSHIRT  
CROPPED SLEEVES



HOODIE



SWEATSHIRT



OVERSIZED  
SWEATSHIRT



SWEATER VEST W/ SLEEVE



PONCHO STYLE



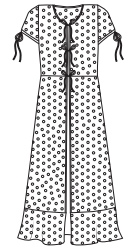
LONG SWEATER VEST



LAYERING TANK



SHEER DUSTER



SHEER KIMONO



DENIM VEST



QUILTED VEST



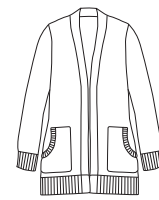
BASIC CARDIGAN



SHORT SLEEVE CARDIGAN



OVERSIZED CARDIGAN



LONG CARDIGAN



BLAZER



SHACKET



CROPPED TRENCHCOAT



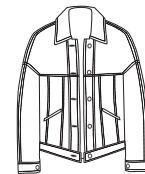
QUILTED JACKET



FAUX FUR



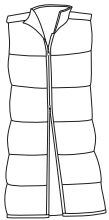
BOMBER JACKET



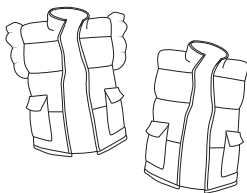
DENIM JACKET



CROPPED DENIM



LONG PUFFER VEST



PUFFER VEST



SHORT PUFFER



LONG PUFFER



MOTO JACKET



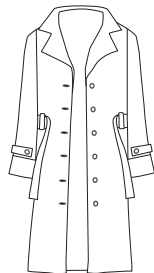
CARGO JACKET



KIMONO



DUFFLE COAT



TRENCHCOAT



PEA COAT



RAIN COAT



BOYFRIEND



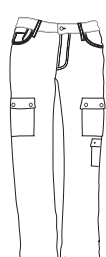
WORN  
BOYFRIEND



BOOTCUT



FLARE



CARGO



CHINO



PAPER BAG



PAPER BAG/  
GATHERED



WIDE LEG  
CUFFED



SKINNY



HAREM



JOGGERS



LEGGINGS



PALAZZO



PEGGED



SAILOR



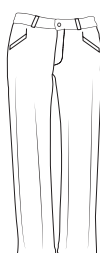
HIGH-WAISTED  
FLARE/WIDE LEG



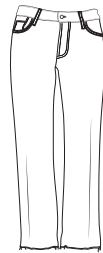
PLEATED



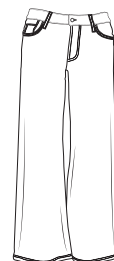
RELAXED  
PLEATED



SLACKS



STRAIGHT



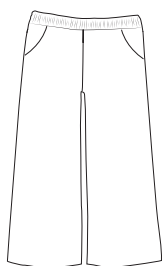
WIDE LEG



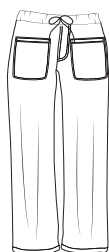
WIDE  
WAISTBAND



BARREL  
JEANS



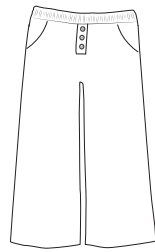
PATTERNED PULL-  
ON PANT



PULL-ON  
JEAN



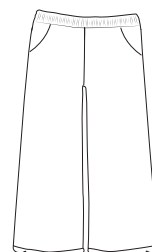
TRACK PANTS



PULL-ON  
BOXER PANT



FRONT POCKET  
DETAIL



PULL-ON PANT  
WITH RUFFLE



JUMPER



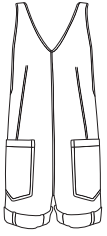
FITTED JUMPER



OVERALLS



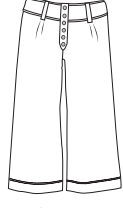
BARREL OVERALLS



SHORTALL



CAPRI



WIDE LEG  
CAPRI



PULL-ON  
POCKET



BOARD  
SHORTS



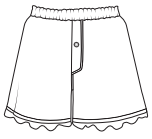
LONG  
CARGO



CULOTTES



BERMUDA



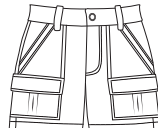
RUFFLED  
BOXER



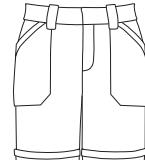
BOXER



CHINO



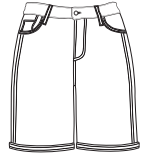
CARGO



MID RANGE  
POCKET/CARGO



DENIM



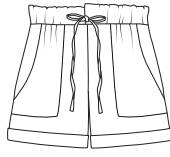
BARREL  
DENIM



SAILOR



TIE WAIST



PAPER BAG



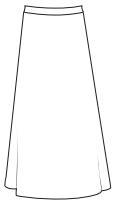
PAPER BAG/  
GATHERED



DRAWSTRING



LACE



STRAIGHT  
MAXI



TIERED



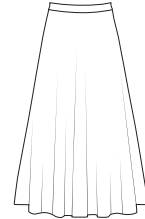
MAXI  
DENIM



SATIN  
STRAIGHT



MAXI  
BALLOON



MIDI/MAXI  
FULL SKIRT



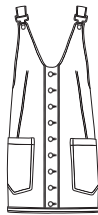
RUFFLED



SHORT  
BALLOON



WRAP



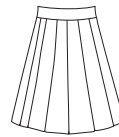
SKIRTALL



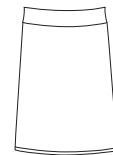
A-LINE



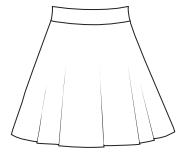
PENCIL



PLEATED



STRAIGHT



CIRCLE



PAPERBAG/  
GATHERED DETAIL



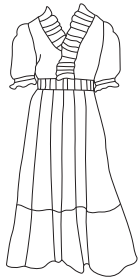
MIDI  
DENIM



MINI  
DENIM



MAXI WITH STRAPS



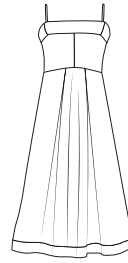
MIDI DRESS



MAXI DRESS



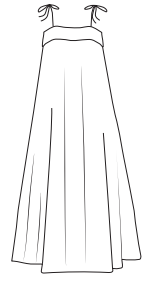
SUNDRESS



EMPIRE WAIST



SLIP DRESS



TENT DRESS



SHIFT DRESS



SWING



WRAP



SHIRT DRESS



TEE



TANK



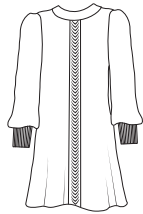
PUFF SLEEVE



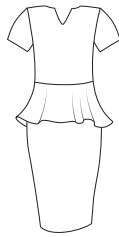
MINI DRESS



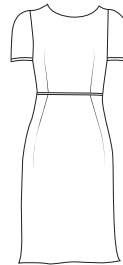
DROP WAIST



SWEATER DRESS



PEPLUM



SHEATH



HALTER



FITTED



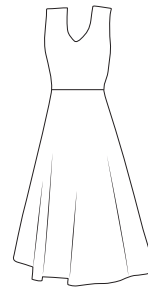
STRAPLESS



POUF DRESS



ASYMMETRICAL



A-LINE



MATCHING  
SWEATS SET



MATCHING  
HOODIE SET



SKIRT +  
TOP SET



CASUAL  
PRINTED SET



DRESSIER  
SET



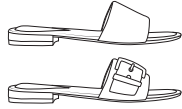
SHORTS  
SET



FLIP FLOP



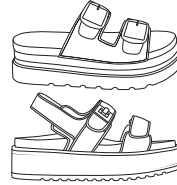
STRAPPY SANDALS



SANDAL FLATS



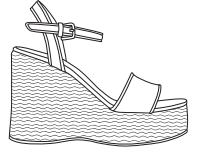
PLATFORM



PLATFORM SANDALS



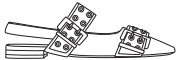
ESPADRILLE



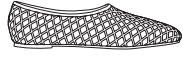
WEDGE



D'ORSAY FLAT



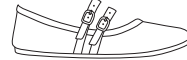
SLINGBACK



JELLY/  
MESH SHOE



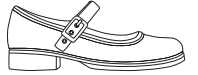
FLAT SLIDE



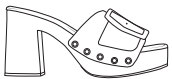
BALLET FLAT



MULE



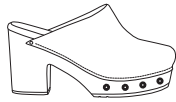
MARY JANE



CLOG SANDAL



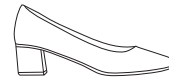
CLOG



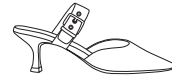
STUDDED  
CLOG



PUMP



BLOCK HEEL



KITTEN HEEL



PEEP TOE



T-STRAP



STILLETTO



BOW



CHUNKY HEELS



PLATFORM  
HEEL



SLIP-ON



SNEAKER



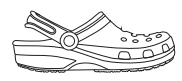
PLATFORM  
SNEAKERS



CHUNKY  
SNEAKER



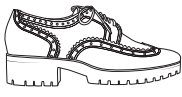
HIGH TOP  
SNEAKER



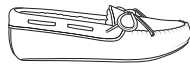
CROCS



OXFORD



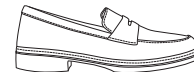
CHUNKY  
OXFORD



MOCCASINS



FLAT LOAFERS



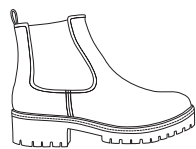
LOAFER



CHUNKY  
LOAFERS



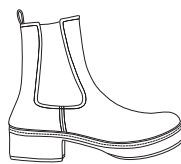
CHELSEA BOOT  
LOW



CHELSEA BOOT  
MID



CHELSEA BOOT  
HIGHER



CHELSEA BOOT  
SLIM FIT



ANKLE BOOT



TALL BOOT



HIGH BOO



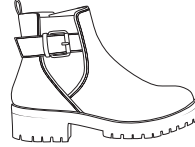
T DRESS BOOT  
HIGH



DRESS BOOT  
WITH HEEL



DRESS BOOT  
LOW



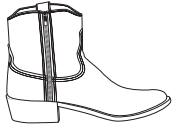
CHUNKY  
DRESS BOOT



MOTO BOOT  
HIGH



MOTO BOOT  
LOW



COWBOY BOOT  
LOW



COWBOY BOOT  
MID CALF



COWBOY BOOT  
HIGH



RUGGED BOOT



RIDING BOOT



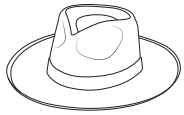
SHEEPSKIN  
BOOT



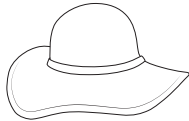
SLIDE ON  
CLOGS



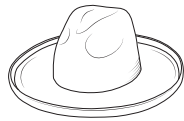
SLIDE ON  
CLOGS BOOTIE



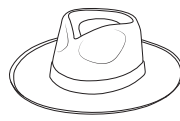
FELT HAT RANCHER



FLOPPY HAT



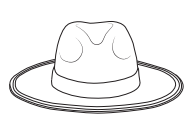
FELT HAT WIDE BRIM



FELT HAT RANCHER



COWBOY HAT



BEACH HAT



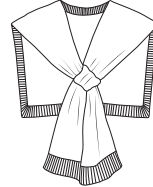
BEANIE HAT



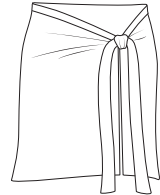
TRUCKER HAT



DICKIE



SWEATER SHAWL



WRAP/COVER UP SARONG



TEARDROP EARRINGS



STATEMENT EARRINGS



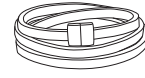
HOOP EARRINGS



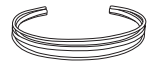
STUD EARRINGS



RINGS



WRAPPED BRACELET



BRACELET



CHARM NECKLACE



SHORT/CHOKER NECKLACE



STATEMENT NECKLACE



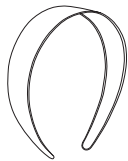
PENDANT NECKLACE



LAYERED NECKLACE



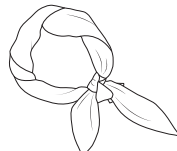
HEAD/NECK TRIANGLE SCARF



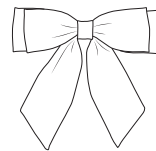
HEADBAND



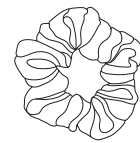
HEADBAND WITH BOW



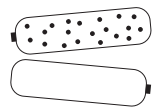
BANDANA



HAIR BOWS



SCRUNCHIE



BARRETS



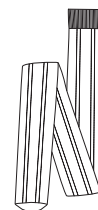
PATTERN SOCKS



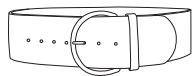
RUFFLE SOCKS



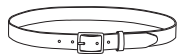
LETTUCE EDGE SOCKS



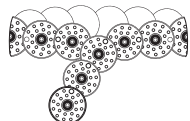
TIGHTS



CHUNKY BELT



BELT



CONCHO BELT



GLASSES



SUNGLASSES



BROOCH/CHARMS



BAG BANDANA



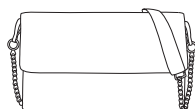
BAG CHARM



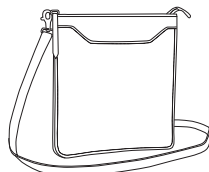
TOTE BAG



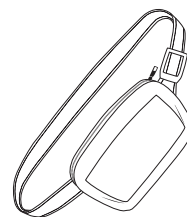
OVERSIZED TOTE BAG



CLUTCH



CROSSBODY



CROSSBODY FANNY PACK



BACKPACK



PLEASE NOTE ALL IMAGES IN THIS LOOK BOOK ARE LEGALLY COPYRIGHTED, ORIGINAL ARTWORK THAT MAY NOT BE USED FOR ANY REASON OTHER THAN AS A RESOURCE TO BE PAIRED WITH OUR PRETTY LITTLE LOOKS FASHION CARDS.™